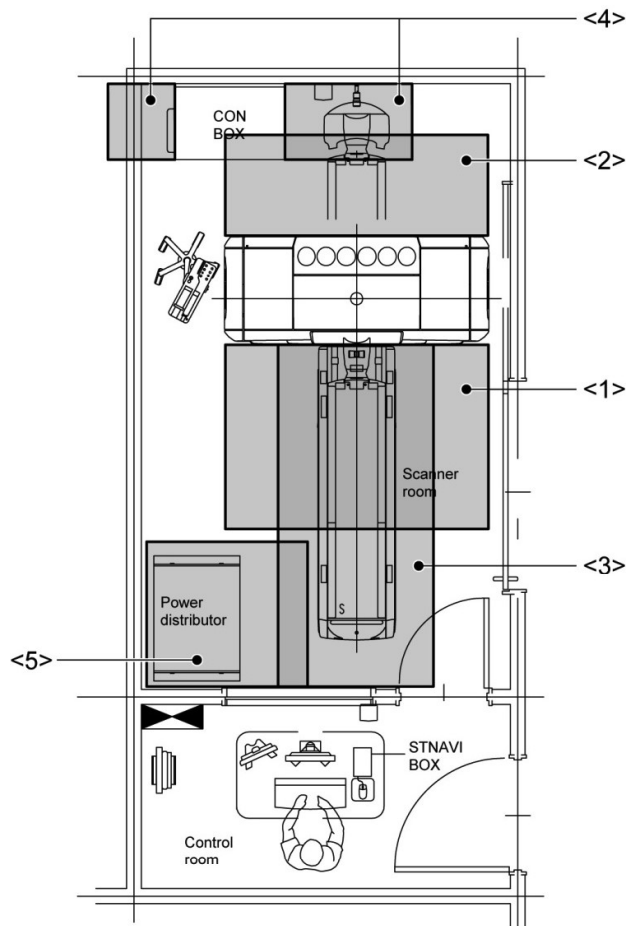


(4) Maintenance space



- <1> Since the scanner front cover opens outward, provide a clearance of 1650 mm for opening/closing the cover.
- <2> Provide a clearance of at least 1245 mm behind the scanner for the IN stroke of the couch top (for CBTB-031B). Refer to subsection 1.8.3 (3) "Installation of the gantry".
- <3> Provide a clearance of at least 400 mm from the rear edge of the patient couch for servicing the patient couch.
- <4> Provide a clearance of at least 1000 mm in front of the CON BOX and at least 500 mm behind the CON BOX to ensure sufficient service space. In addition, provide a clearance of at least 300 mm in front of the CON BOX and at least 250 mm behind the CON BOX in normal operation.
- <5> Provide a clearance of at least 430 mm in front of the power distributor and at least 150 mm on the left and right sides for service work. In addition, a clearance of at least 100 mm must be provided on two of the three sides (left, right, and rear sides) of the power distributor for ventilation.